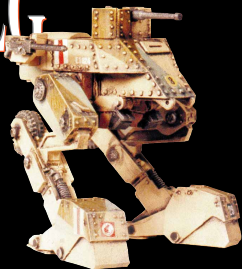


# GEAR KRIEG™

## MK VIIIA CAVALIER



DP9-608



Year In Service:	1940	Maneuver:	-1	Armor:	8/16/24
Threat Value:	28	Fire Control:	-1	Movement:	Walk 2/4, Gr. 3/5
Size:	7	Sensors:	None	Deployment Range:	70km
Crew:	2	Communications:	-2/1km		

### PERKS & FLAWS

2 x Battle Arms (R4), Decreased Maneuver (R1, Ground), Exposed Crew, Inefficient Controls, Poor Towing, Unstable, Weak Point (R1, Movement)

### WEAPONS

Name	Arc	S	M	L	Ex	Acc	DM	#	Ammo	Spec
Vickers HMG	FF	1	2	4	8	0	x4	1	150	ROF1, AI
.30 LMG	F	1	2	4	8	0	x2	2	200	ROF2, AI
Grenades	F	-	-	-	-	-1	x8	-	3	AI

### VARIANTS

Mk VIIIB "Cavalier II", TV: 31      Year in Service: 1940

Remove: Exposed Crew

Add: Reinforced Armor +1 Front

Change: Fire arc of HMG to F